

.....FROM THE STREET TO THE TRACK!

INTRODUCING

COMPETITION SERIES CALIPER

is the new standard in braking performance. Advanced engineering has allowed us to produce a caliper with **increased braking power** in a sleek, lightweight design.

Available with 1.375" and 1.75" pistons with hi-temperature square-cut seals (not O-Rings) for increased braking performance



Dual pin brake pads and anti-rattle clips decrease noise and provide easy pad replacement. Uses standard pads available off-the shelf in a variety of compounds

Billet 6061-T6 aluminum construction

25% INCREASE
 in pad contact area
 over competition

20% INCREASE
 in pad thickness
 over competition



Configurations available to accommodate .375" - 1.00" rotor thickness

Internal fluid passages eliminate external fluid tubes and protect against damage

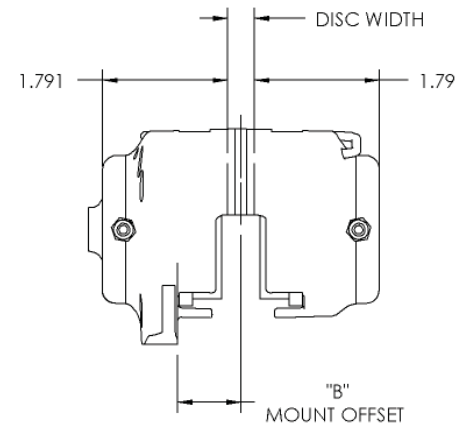
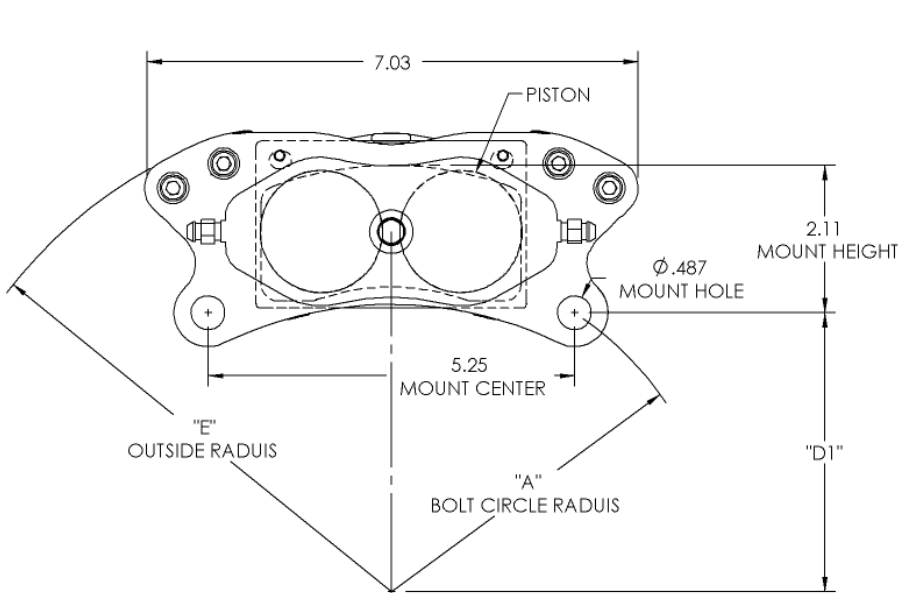
Four position stainless steel bleeder screws allow for flexible mounting and easy bleeding

Comes standard with clear anodized finish. Available with optional powdercoated or polished finishes



SSBC COMPETITION SERIES CALIPERS

SPEC SHEET



CALIPER MOUNTING SPECS:

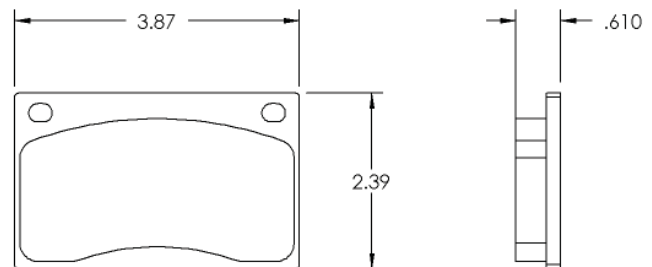
Disc Diameter	"A" Bolt Circle Radius	"E" Outside Radius
10.00	3.96	6.02
10.50	4.15	6.23
10.75	4.25	6.34
11.00	4.35	6.44
11.44	4.53	6.63
11.75	4.66	6.76
12.19	4.84	6.97

Disc Width	"B" Mount Offset
.38	.76
.81	.98
1.00	1.08

PAD SPECS:

FMSI#: D43
 SSBC#: 10129 ("BIG BITE" STRE PAD)
 Dimensions: 3.87" wide
 2.39" tall
 0.610" thick

All dimensions are in inches.



PAD DIMENSIONS

ALSO AVAIL. IN OTHER BRANDS

Hawk: HPS
 HP Plus
 Performance Ceramic
 Raybestos: Professional Grade Plus

VISIT OUR NEW WEBSITE AT...
SSBRAKES.COM

CALL NOW FOR MORE INFO...
1.800.448.7722